

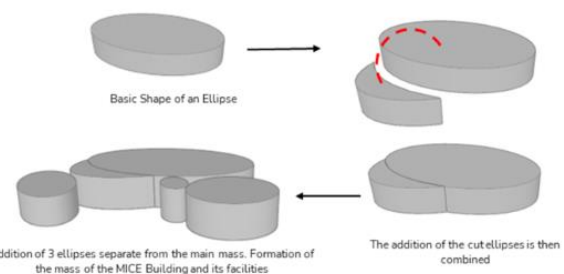
## PERANCANGAN GEDUNG MICE KAI CORPORATE UNIVERSITY DENGAN PENDEKATAN ARSITEKTUR KONTEMPORER

**Reni Fitriani**  
Arsitektur, Universitas Mercu Buana

MICE KAI Corporate is on Jl. Laswi is one of the links between eastern Bandung, southern Bandung and North Bandung so it is busy with people passing by Jl. Laswi is also an area surrounded by office, business and educational areas.

As an effort by the KAI company to ensure that its employees have the skills, knowledge and competencies needed to achieve the company's business goals, the plan for the MICE building and its supporting facilities is expected to provide great benefits for the company, employees and other parties.

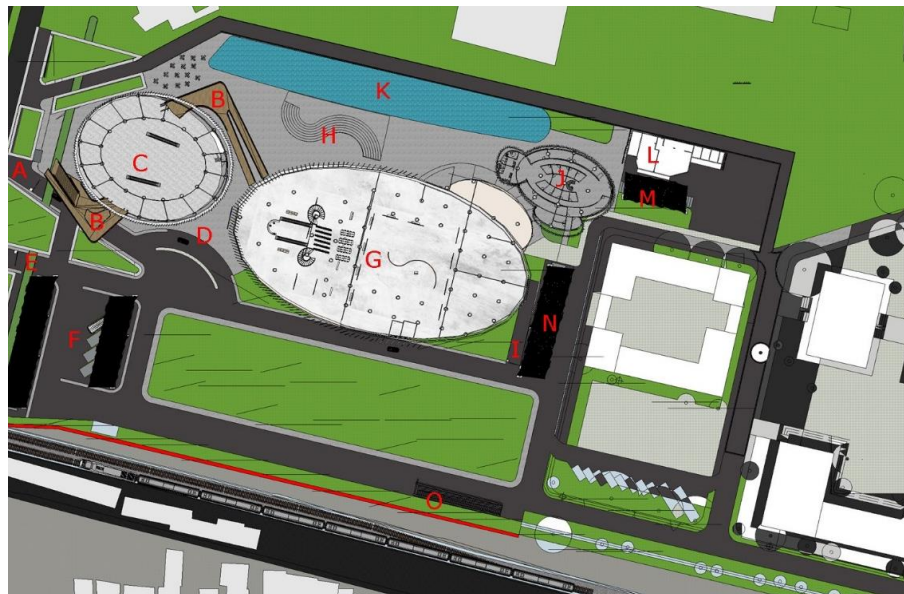
**Architectural Design Concept - Building Design Concept (MICE)** with the theme of a Contemporary Architecture approach with innovative modern development and depicting the identity of PT. KAI will become a building that can become an icon in the area.



### Mass Composition Concept :

The basic shape of the building is inspired by the shape of an ellipse, where the characteristics of an ellipse are the same as those of a circle, namely:

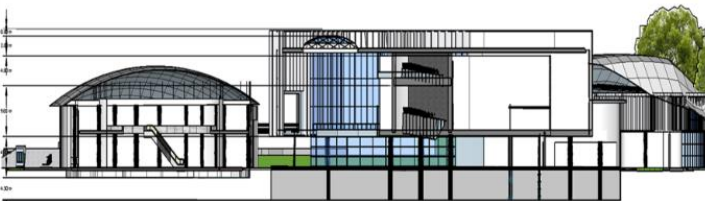
1. The curved shape gives a dynamic, relaxed and informal impression
2. It has no corners and each view has the same position, making this shape able to reach views from all directions.



### Keterangan :

- A. : In Site
- B. : Bridge
- C. : Tennant Space
- D. : Drop Off
- E. : Out Site
- F. : Bus, Bike and motorcycle parking
- G. : Auditorium Facilities
- H. : Amphiteater
- I. : To The Basement
- J. : Assessment Center & Hrd Unit Office
- K. : Embung
- L. : Mep Room
- M. : Manager Car Parking
- N. : Manager Motorcycle Parking
- O. : From The Basement
- P. : Loading Dock

### SECTION :



SECTION A - A



SECTION B - B

INTERIOR AND EXTERIOR PERSPECTIVES

### ELEVATION :



SOUTHERN VIEW



NORTH VIEW



WEST VIEW



EAST VIEW

